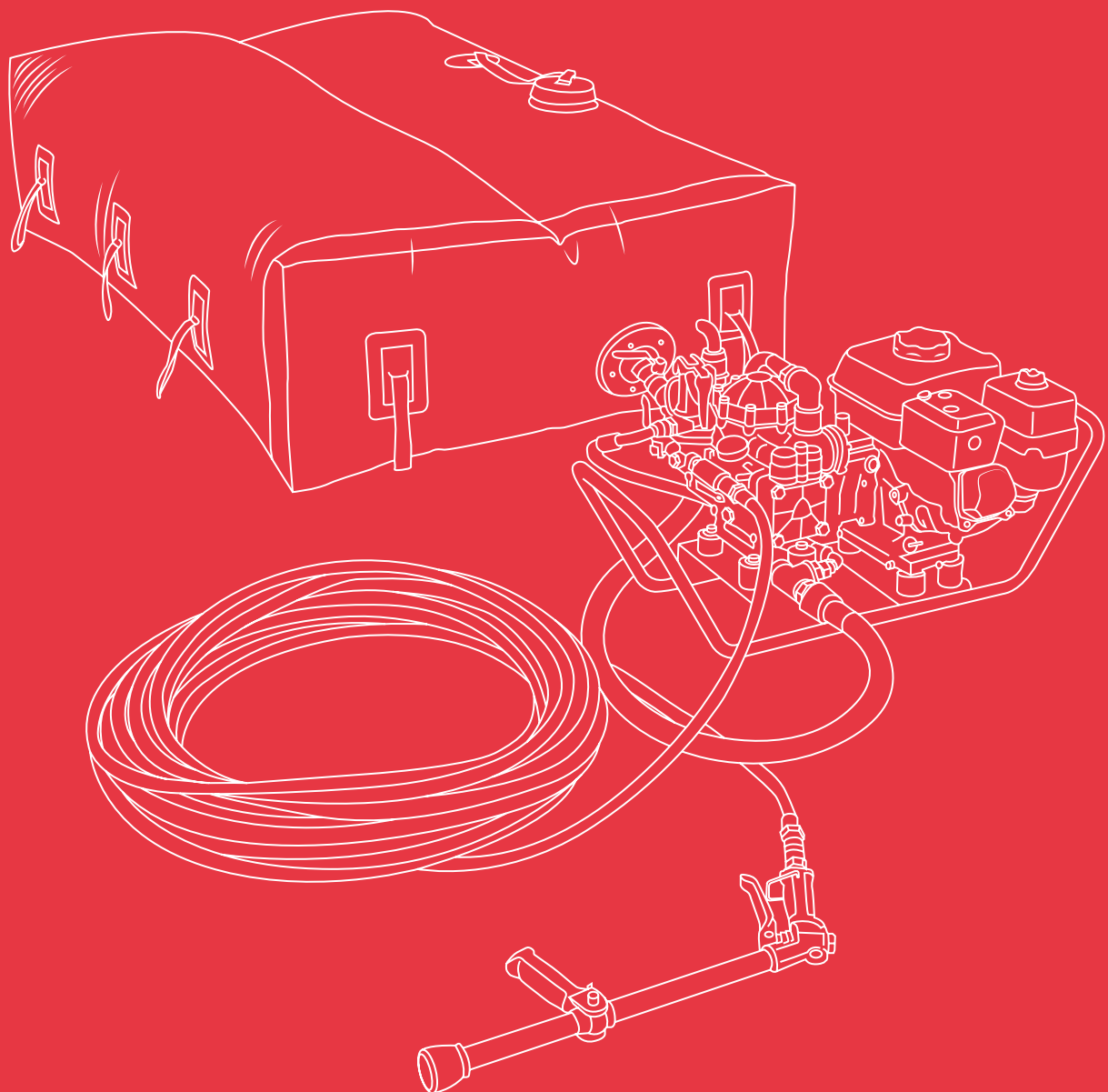


Skid unit with a membrane pump

Flexible tank
Medium pressure



Flexible skid unit with a membrane pump

Medium pressure | Up to 40 bar

Rapid intervention skid units designed for pickup vehicles and trailers, equipped with membrane pumps up to 40 bar with a maximum flow of up to 36 L/min.

- High-quality components and great replacement part availability
- The best quality/price ratio
- 2 year warranty



What is included?

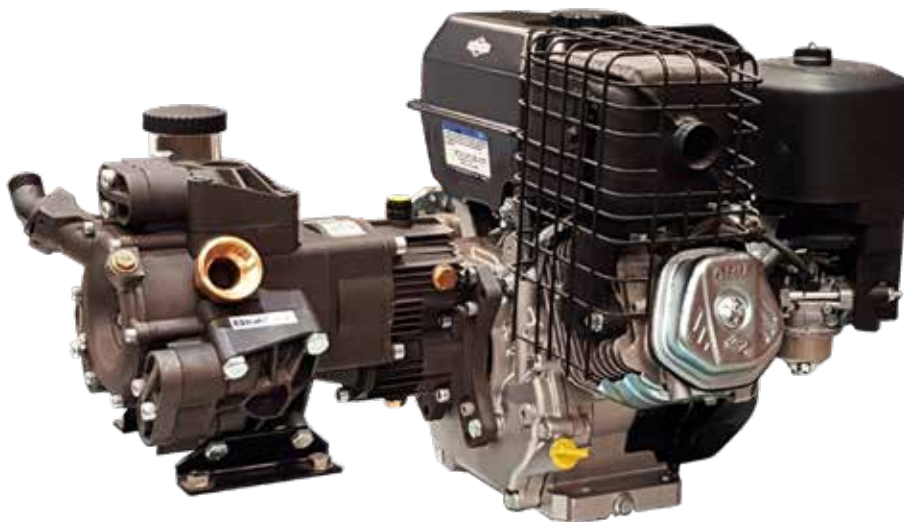
Motor	Gasoline (4.8 - 6.5 HP)
Membrane pump	36 L/min. 40 bar
Hose	High pressure
Water tank	400 L
Attack nozzles	Water
Suction oversleeve	5 m long

Uses

Wildland fires	Recommended use
Container and vehicle fires	Recommended use
Cleaning and unclogging	Less recommended

1 Motor pump unit

Available options. 4-stroke gasoline combustion motors and membrane pumps.



Motor	Power*	Pump	Max. pressure **	Max. flow **
B&S XR950	6.5 HP	AR30	40 bar	36 l/min
Honda GX160	4.8 HP	AR30	40 bar	36 l/min

Gasoline motor.

* The nominal engine power indicated in this document is the net power tested on a production engine for the engine model pursuant to SAE J1349 (HONDA) / SAE J1940 (Briggs& Stratton) at a specific speed. This value may vary in mass produced motors. The actual output power of the engine installed on the end machine will vary depending on a number of factors such as the applicable engine operating speed, the environmental conditions, maintenance and other variables.

** These values are at direct pump outlet.

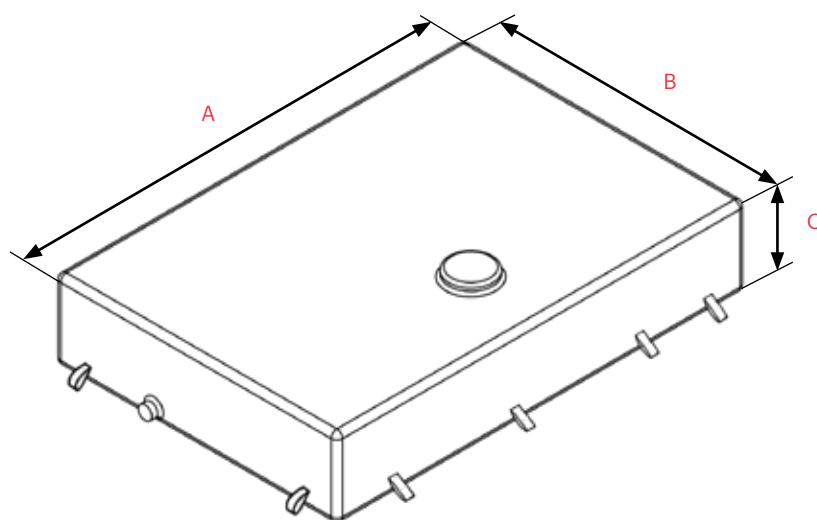
*** The power, pressure and flow values are valid in working conditions: temperature 25°C at sea level. **IMPORTANT:** Engine power will decrease 3.5% for every 300 meters above sea level and 1% for each 5.6°C above 25°C.



2 Water tank

Vallfirest flexible tanks can be folded down for storage to reduce the necessary space for transport. They may be used on pickup vehicles or unfolded on the ground using a protective canvas.

- Made of high-tenacity PES (polyethersulfone) canvas coated in PVC and lacquered on two sides.
- Features 10 belt anchoring points.
- 1 threaded inspection cover with a diameter of 100 mm to fill the tank.
- Water suction panel with a quick Camlock motor pump connection.



A: Length.
B: Width.
C: Height.

Standard colors

Orange
Customizable color upon customer request.

Tank dimensions

Tank	A [mm]	B [mm]	C [mm]
400 F	1000	1450	280

3 Components included

3.1 Suction oversleeve

Clear flexible PVC spiral absorption oversleeve with rigid PVC spiral and smooth inner surface. Includes non-return foot valve and filter. Includes a Storz connector for connection to the Vallfirest skid unit.

TECHNICAL DATA

- Length: 5 m
- Oversleeve diameter: DN40 (1-1/2") or DN50 (2") depending on the pump
- Weight: 4 kg (DN40) or 5.5 kg (DN50)



3.2 Hose

DN12 (1/2") 50 meter semi-rigid hose. Comprised of an inner layer of synthetic rubber reinforced with a metal mesh and coated in abrasion-resistant synthetic rubber. Features a quick water and foam nozzle connection system.

TECHNICAL DATA



- SAE 100 R1AT DN12 (1/2"): 160 bar operating pressure, 0.45 kg/m weight



3.3 Water nozzle

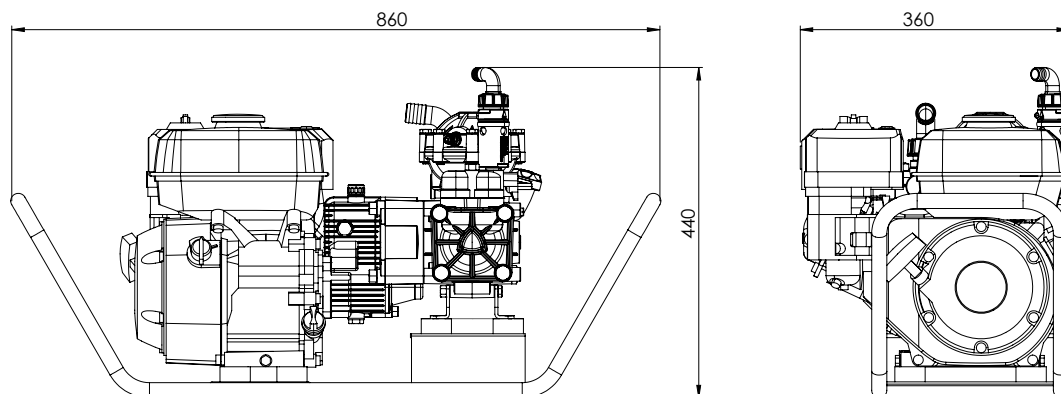
High-pressure and high-range nozzle. Adjustable angle. Interchangeable ceramic nozzle tip and quick connection system.

TECHNICAL DATA

- Maximum pressure: 60 bar
- Maximum flow: 110 L/min.
- Concentrated stream > 
- Hollow cone/fog stream > 



4 General dimensions



* Dimensions of the tank on page 4.

5 Configurations available

Ref. VFT	Tank	Motor	Battery and electric start	Power *	Pump	Max. Pressure**	Max. Flow **	Approx dry Weight
DVD1140-G30AO	400 FD	B&S XR950	NO	6.5 HP	AR30	40 bar	36 l/min	
DVD1140-G31AO	400 FD	Honda GX160	NO	4.8 HP	AR30	40 bar	36 l/min	

FD: flexible tank, double cabin.

Gasoline motor.

* The nominal engine power indicated in this document is the net power tested on a production engine for the engine model pursuant to SAE J1349 (HONDA) / SAE J1940 (Briggs& Stratton) at a specific speed. This value may vary in mass produced motors. The actual output power of the engine installed on the end machine will vary depending on a number of factors such as the applicable engine operating speed, the environmental conditions, maintenance and other variables.

** These values are at direct pump outlet.

*** The power, pressure and flow values are valid in working conditions: temperature 25°C at sea level. **IMPORTANT:** Engine power will decrease 3.5% for every 300 meters above sea level and 1% for each 5.6°C above 25°C.

Any questions? Contact us: clientes@vallfirest.com | T. +34 938 678 779